

The following demonstrates how to set up your MacOS computer for remote connection:

1. In *Finder*, click **System Preferences**.

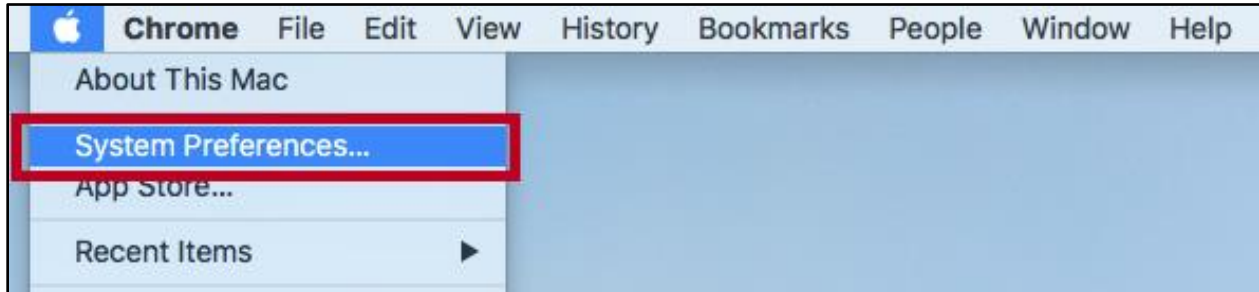


Figure 1 - Click System Preferences

2. Click **Sharing**.



Figure 2 - Click Sharing

3. The *Sharing* window appears. Click the **Screen Sharing** checkbox (See Figure 3).
4. Click **Add (+)** (See Figure 3).

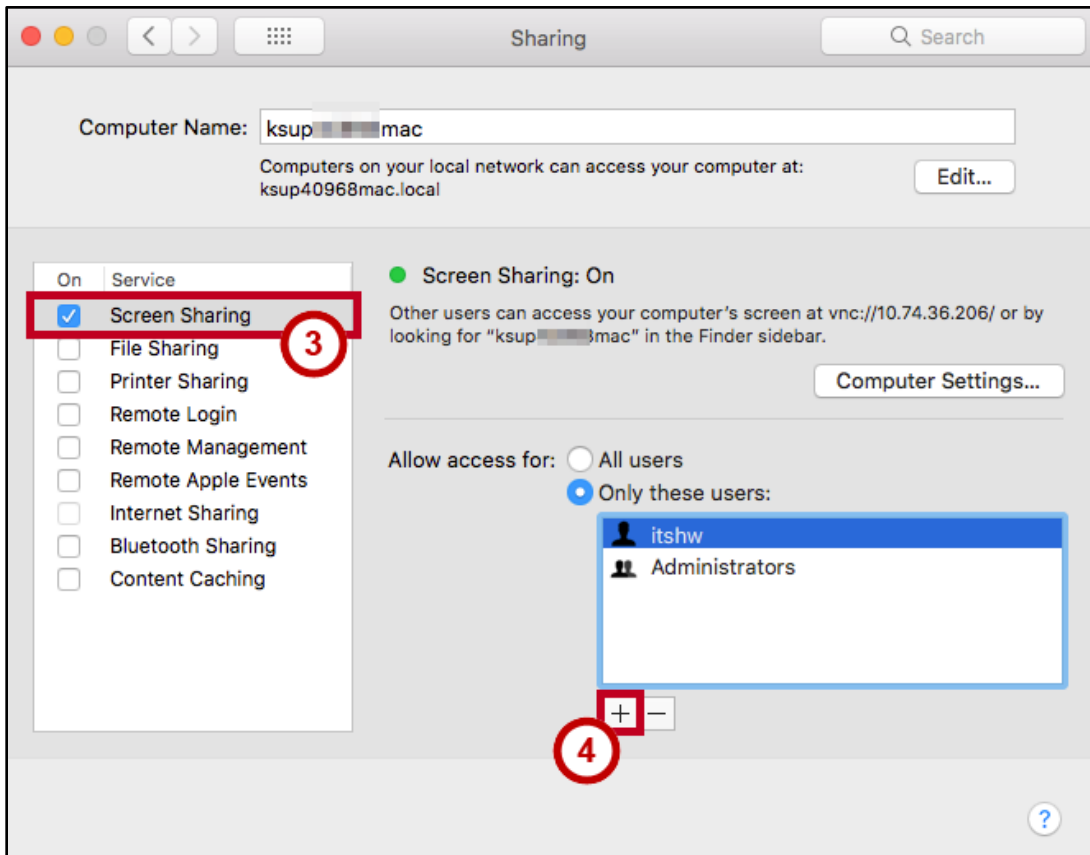


Figure 3 - Screen Sharing

5. Under *Users & Groups*, click your **Name** (See Figure 4).
6. Click **Select**. (See Figure 4).

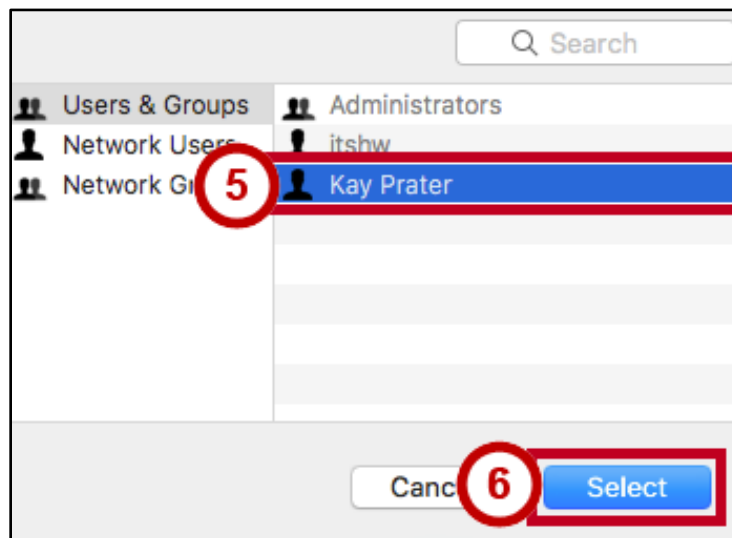


Figure 4 - Select Sharing Username

7. Your name appears in the *Allow access for* window (See Figure 5).
8. Make **note** of the **computer name** (e.g., ksup12345mac) (See Figure 5).
9. To close the *Sharing* window, click the **exit** button in the upper left corner (See Figure 5).

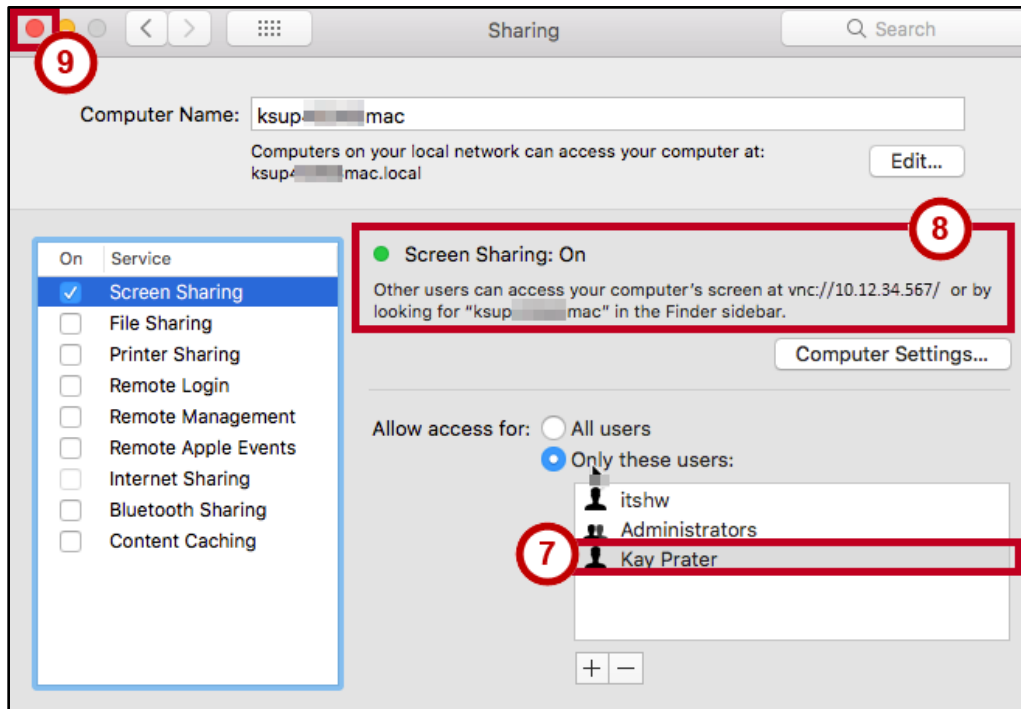


Figure 5 - Computer Name and IP Address