

## KSU VPN Client Installation for Windows 10

The following describes how to install the GlobalProtect agent to connect to the KSU network from off-campus using a VPN connection.

**Note:** This guide was written using *Google Chrome* version 63.0.3239.132.

### Configuring Your Off Campus (Home) PC or Laptop

#### Determining which agent to download

1. In the Windows 10 taskbar, click the **Start menu**.



Figure 1 - Click Start Menu

2. Click **Settings**.

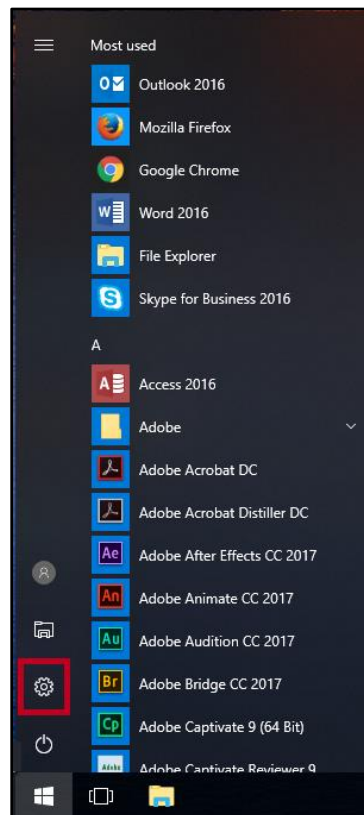


Figure 2 - Click Settings

3. The *Windows settings* window appears. Click **System**.

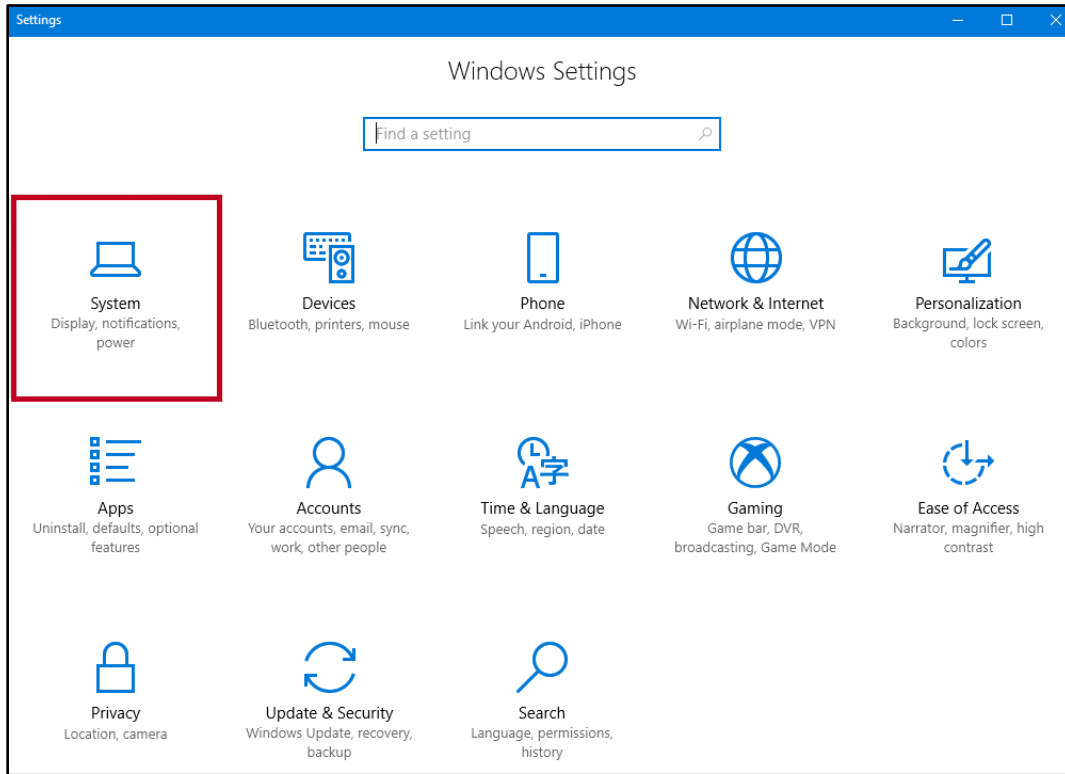


Figure 3 - Click System

4. The *System* window appears. Click **About**.

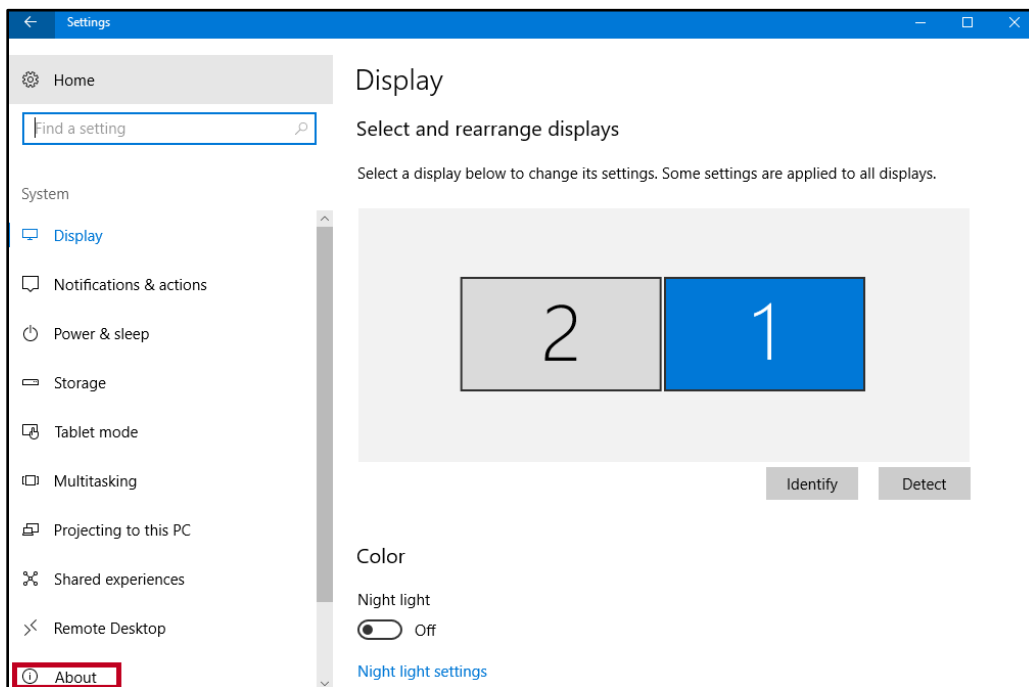


Figure 4 - Click About

5. The *About* window appears. **Make note** of the **System type** to determine which GlobalProtect agent to select (See Figure 5).

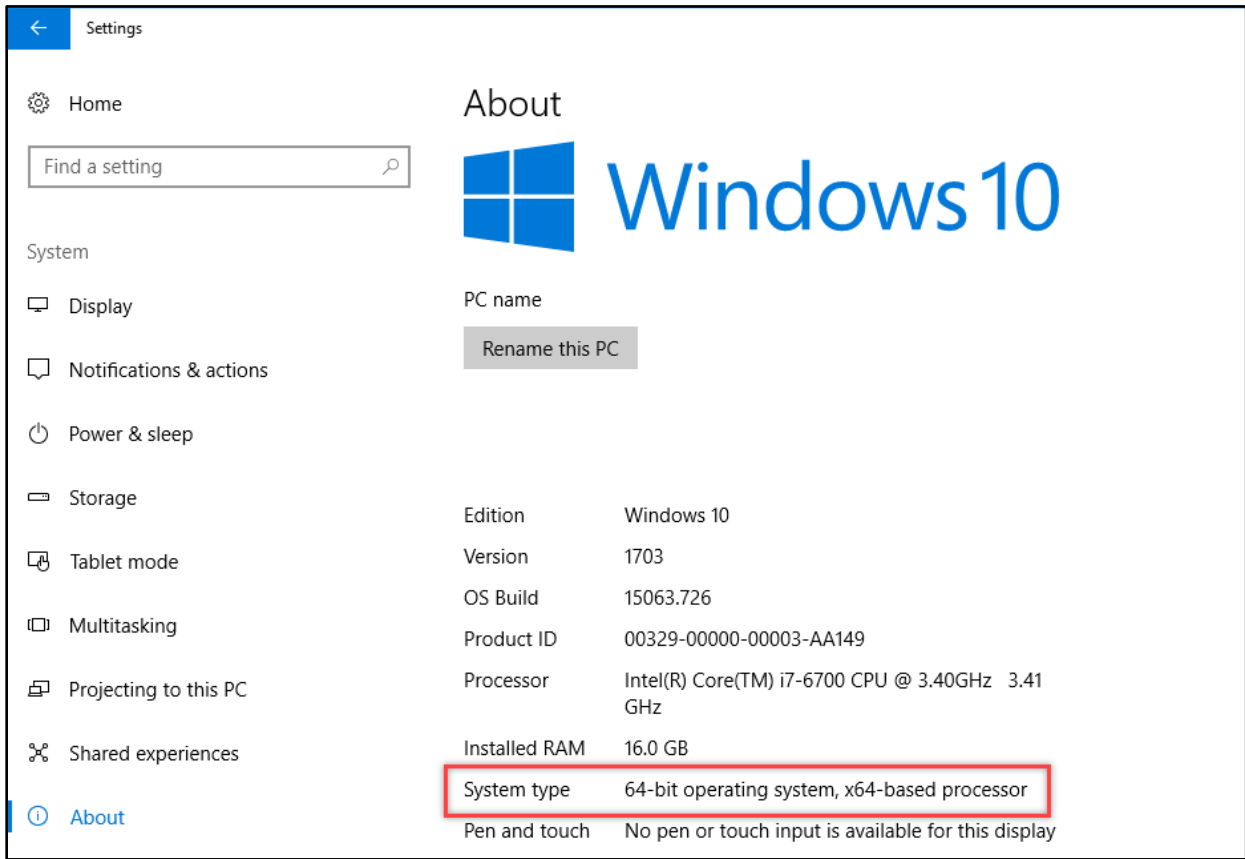


Figure 5 - About Your PC

## Installing the GlobalProtect Agent

1. In your preferred browser, navigate to <https://vpn.kennesaw.edu/>.
2. The *Kennesaw State University VPN* window appears. Enter your **NetID** and **password**. (See Figure 6).
3. Click **LOG IN** (See Figure 6).

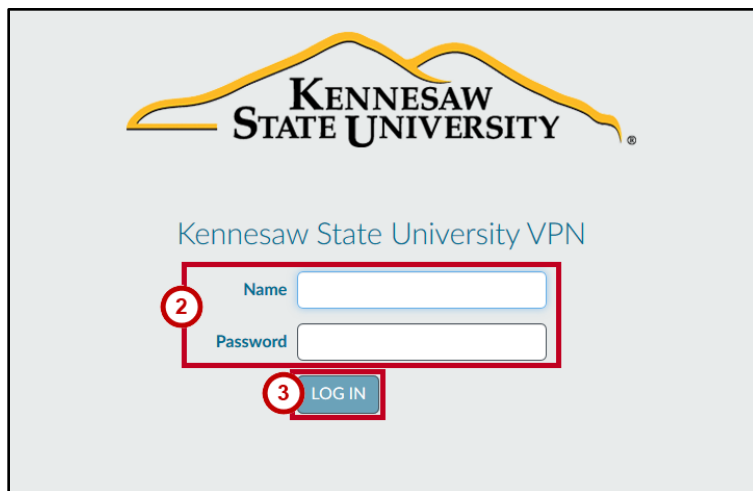


Figure 6 - Enter NetID and Password

- In the *Kennesaw State University VPN* window, click the **download link** that matches the system type you identified above. For example, the screenshot below is selecting the 64 bit agent.

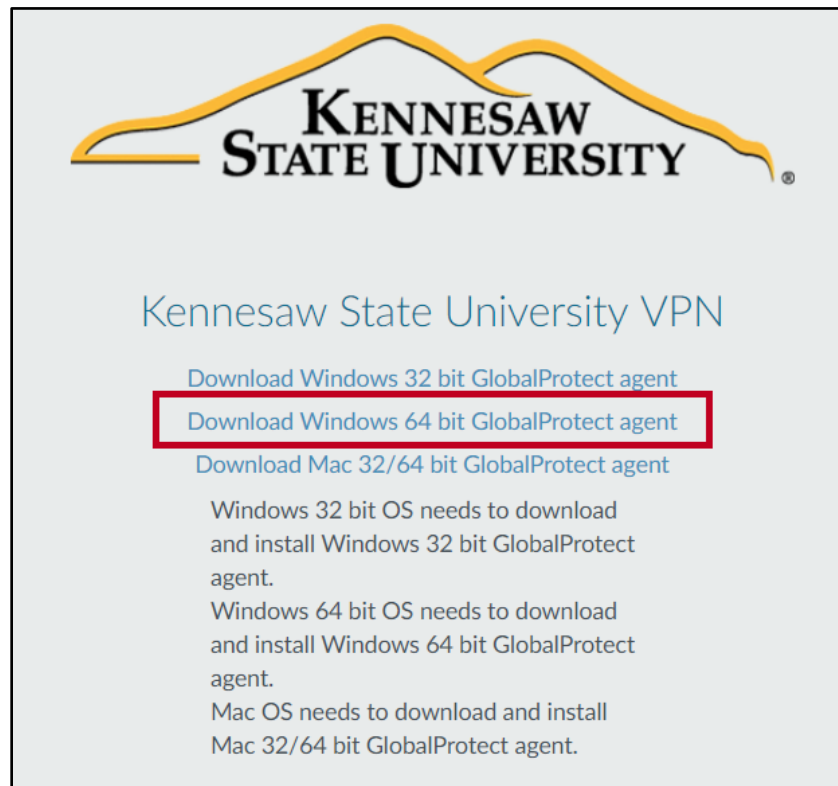


Figure 7 - Click the Download Link

- The browser will begin to download the file.

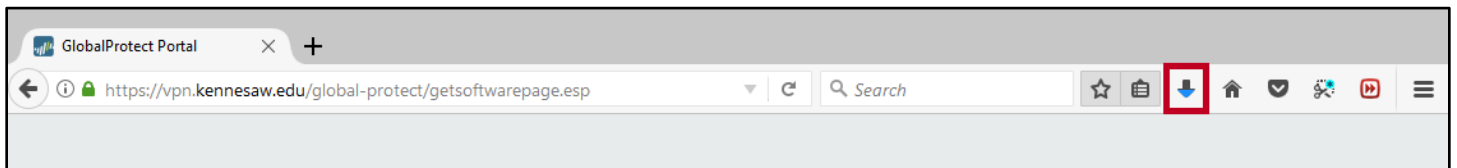


Figure 8 - File Download

- Click the **downloaded file** (e.g., *GlobalProtect64.msi* or *GlobalProtect32.msi*, depending on your operating system) to run the GlobalProtect installation file.

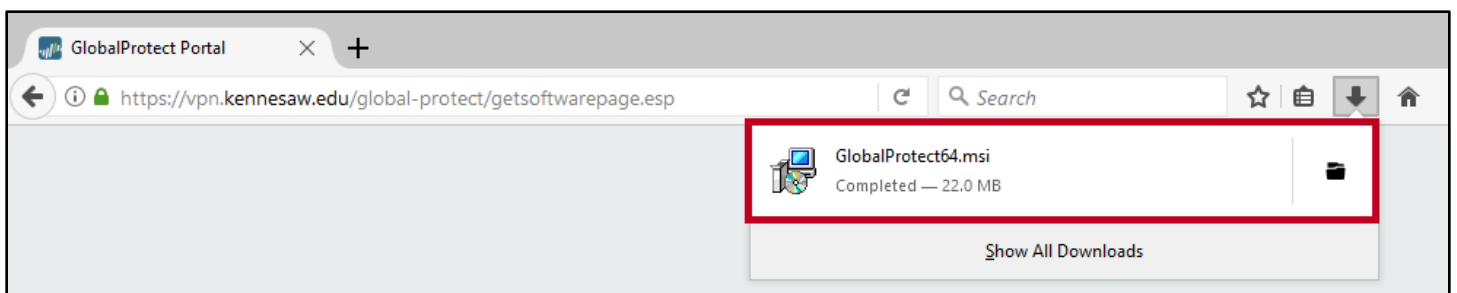


Figure 9 - Run the File

7. Click **Save File**.

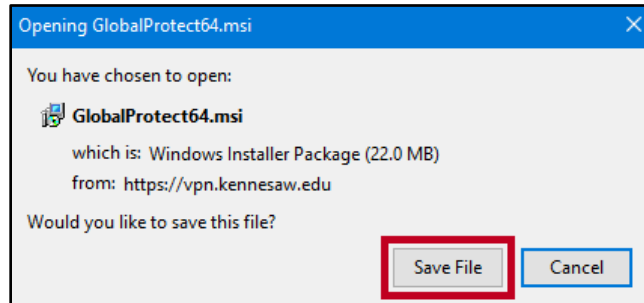


Figure 10 - Save File

8. The *GlobalProtect Setup Wizard* window opens to guide you through the installation process. Click **Next**.

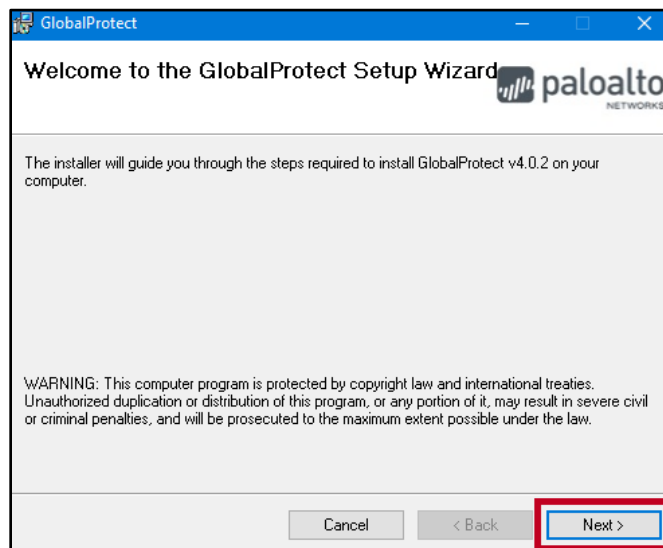


Figure 11 - GlobalProtect Setup Wizard

9. The *GlobalProtect Installer* will populate a folder location for the installation. Click **Next**.

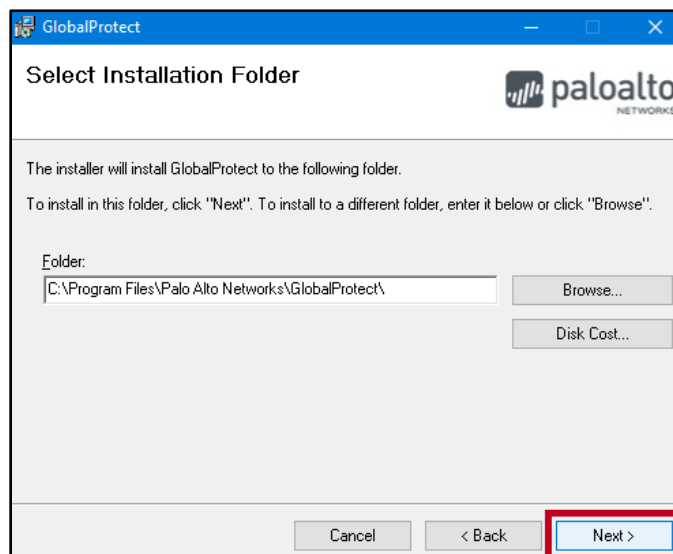


Figure 12 - Click Next

10. The *GlobalProtect Confirm Installation* window appears. Click **Next**.

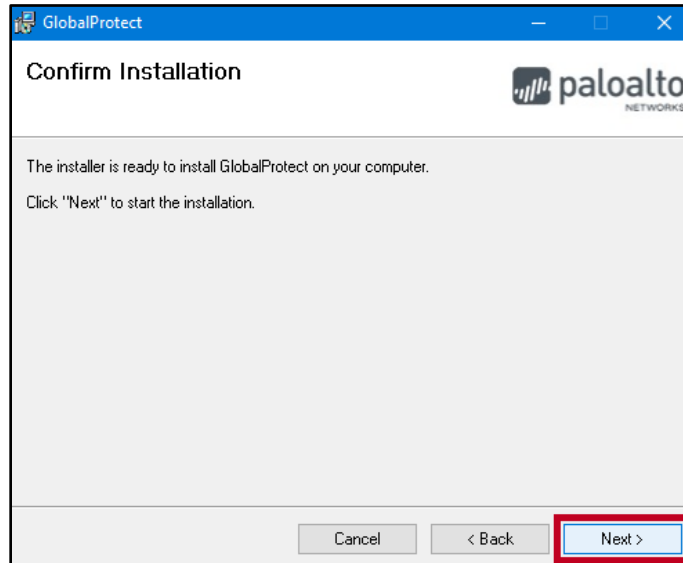


Figure 13 - Click Next

11. The *Installer* window will notify you when the installation process is complete. Click **Close**.

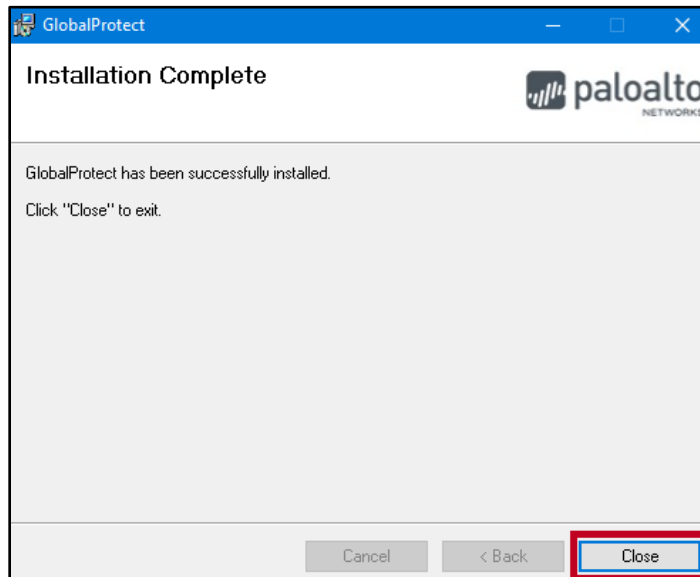


Figure 14 - Click Close

12. The *GlobalProtect client panel* appears. Enter the following:
  - a. In the *Portal* field, enter **vpn.kennesaw.edu** (See Figure 15).
  - b. Click **Connect** (See Figure 15).

**Note:** The *Status* field will indicate *Not Connected* prior to clicking Connect.

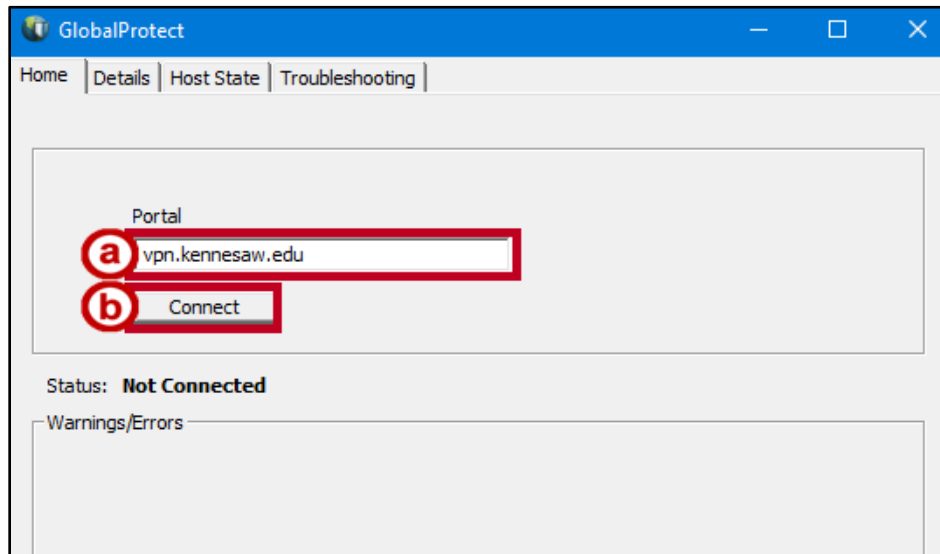


Figure 15 - GlobalProtect Client Panel

13. The *Portal* field will populate with the vpn address entered previously. Enter your **NetID** and **password** (See Figure 16).
14. Click **Connect** (See Figure 16).

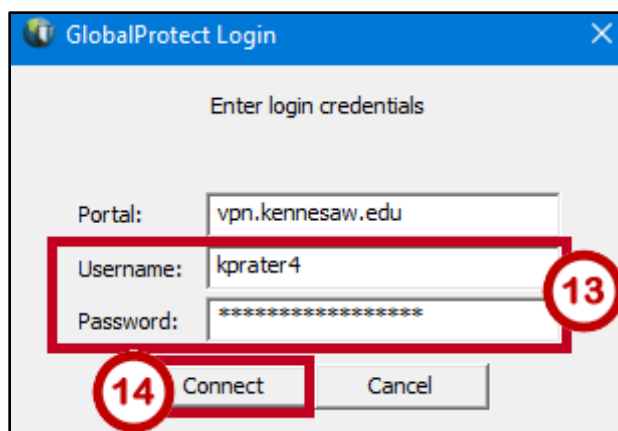


Figure 16 - Enter Login Credentials

15. When successfully connected, the *Status indicator* will change to **Connected**. You are now connected to the KSU campus network through the GlobalProtect VPN client.

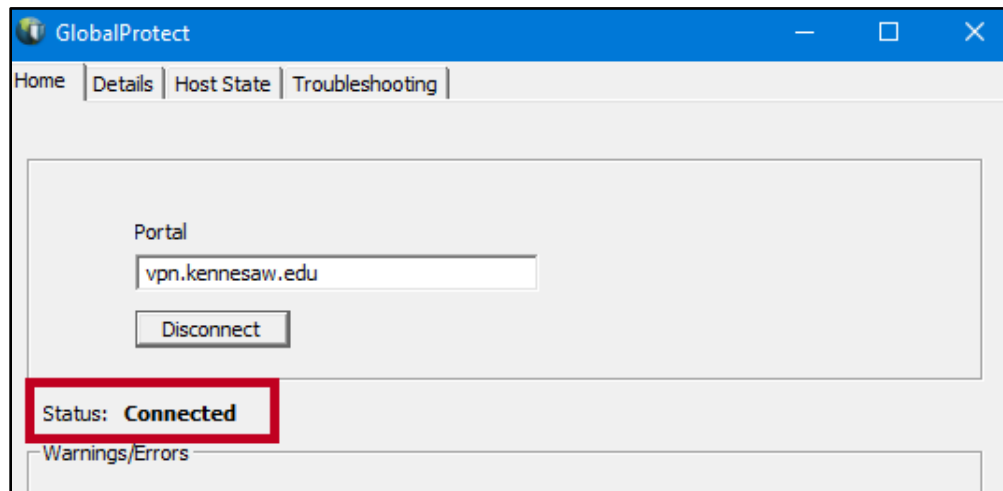


Figure 17 - Connected

16. The *GlobalProtect Welcome* window appears. Click the **Exit(X)** button to close the window.

**Note:** If you do not want to see the *Welcome* window in the future, click the **checkbox** in front of *Do not display this page again*.

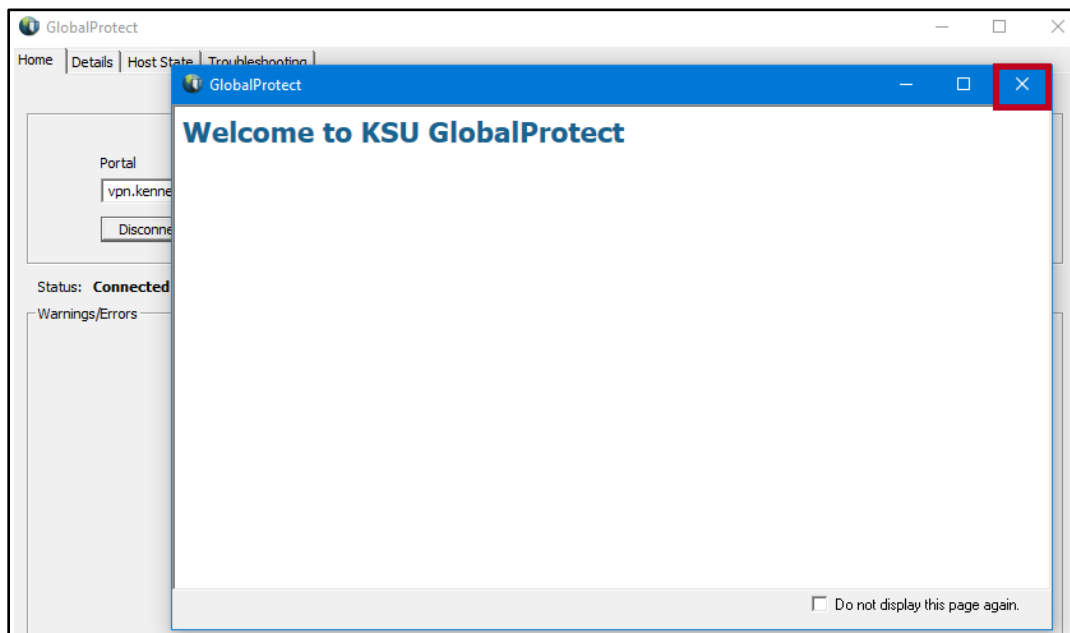


Figure 18 - Welcome Window

17. You may **close** the *GlobalProtect panel* as the application will be running in the background. You may access the panel by clicking the GlobalProtect icon in the taskbar system tray.



Figure 19 - Taskbar System Tray



## Disconnecting the VPN Connection

1. To disconnect from the network, double-click the **GlobalProtect icon** in the taskbar system tray.



Figure 20 - GlobalProtect in Taskbar

2. Click **Disconnect**.

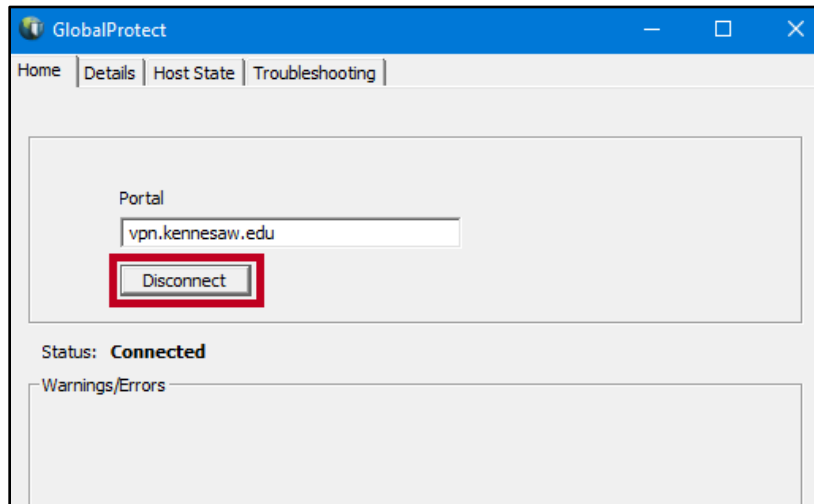


Figure 21 - Disconnect

3. You are disconnected from the VPN when the Status indicator changes to **Disconnected**.

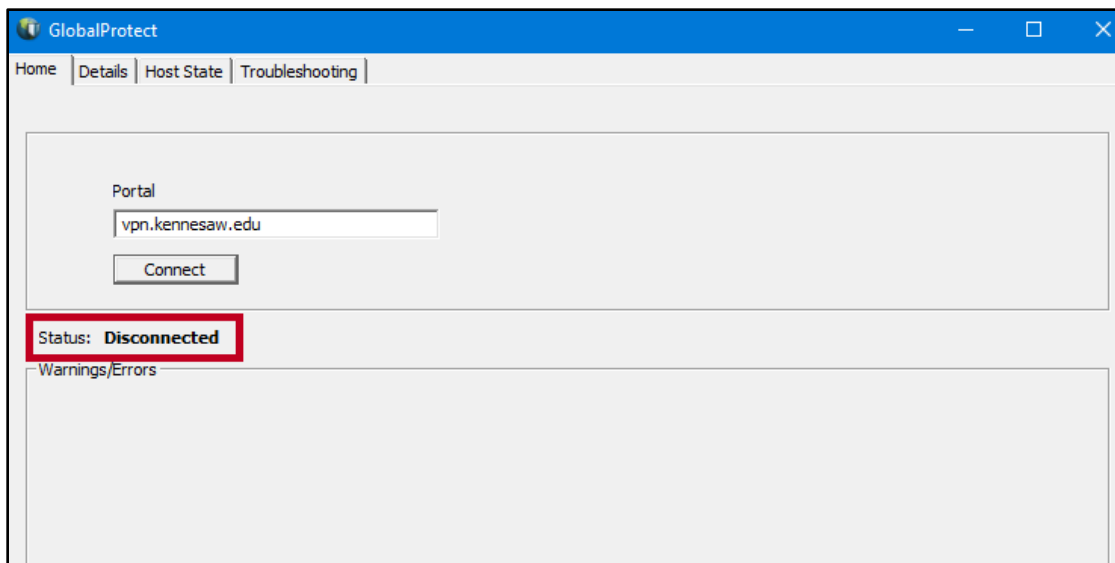


Figure 22 - Disconnected