

## Installing Remotix for Remote Access to Mac Using a PC on Windows 10

The following describes how to install *Remotix* on a Windows 10 PC to allow remote connection to your office Mac. For information regarding connecting remotely to your office Mac, please refer the Connecting to KSU VPN - PC to Mac documentation in the [UITS Documentation Center](#).

1. Using a preferred browser, navigate to **https://apps.kennesaw.edu**.
2. The *Application Gateway Login* window will appear. Enter your **NetID** and **password** (See Figure 1).
3. Click **Login** (See Figure 1).

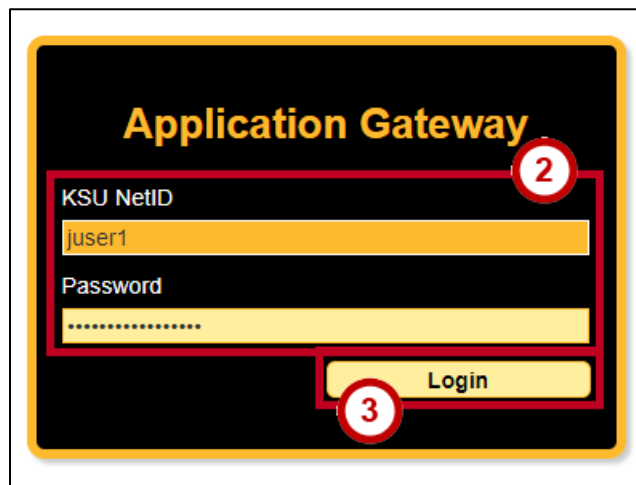


Figure 1 - Application Gateway Login

4. The *Application Gateway* window will appear. Under *Public Applications*, click the **KSU Software Downloads** button.

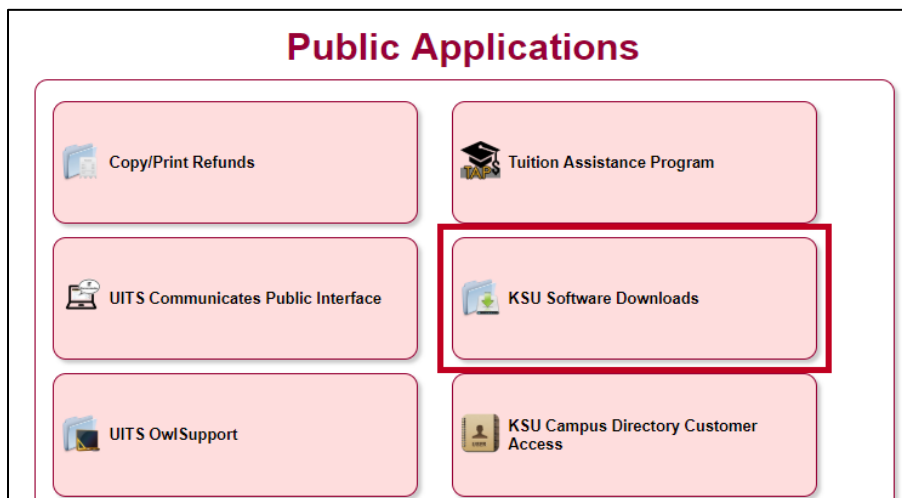


Figure 2 - Click KSU Software Downloads

5. Click **My Available Downloads**.

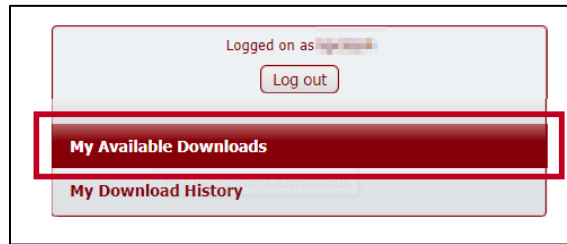


Figure 3 - Click My Available Downloads

6. In the search box, enter **Remotix** (See Figure 4).
7. Click the **Search** button (See Figure 4).
8. A list of matching file names will appear. Next to *Remotix for Mac Remote Access from PC*, click **View Files** (See Figure 4).

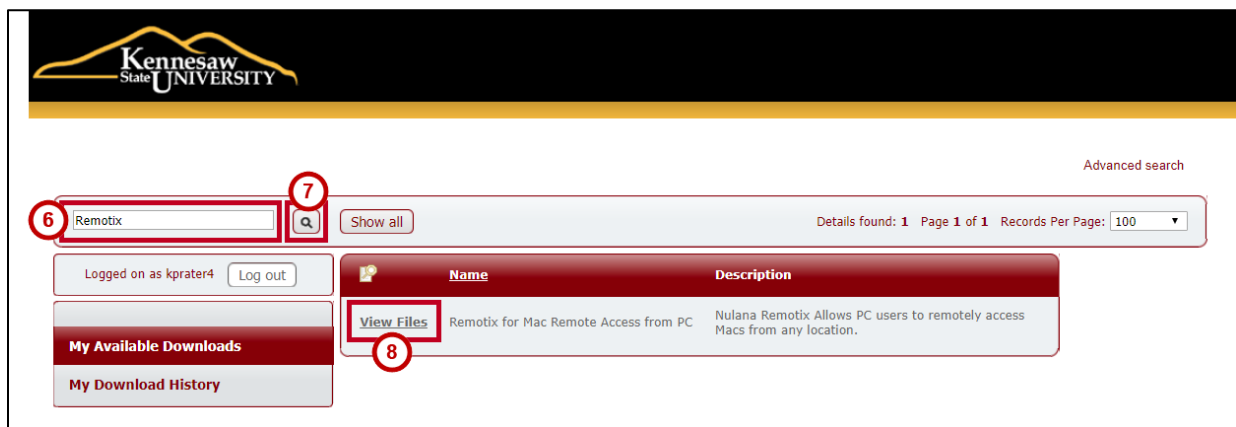


Figure 4 - Click View Files

9. Click **Accept and Continue**.

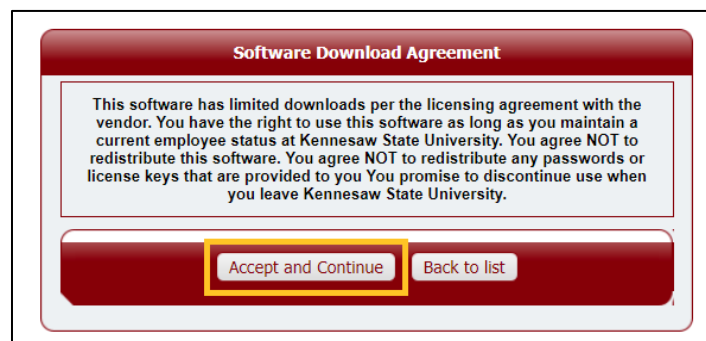


Figure 5 - Click Accept and Continue

10. Click **Download File**.

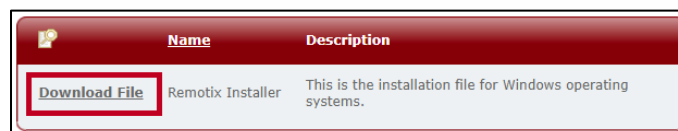


Figure 6 - Click Download File

11. The Remotixinstall.exe file begins to download to your default *downloads* location. When download is complete, locate the file in your default downloads folder and **run** the *Remotixinstall.exe* file to install the application.
12. The *Open File - Security Warning* window appears. Click **Run**.

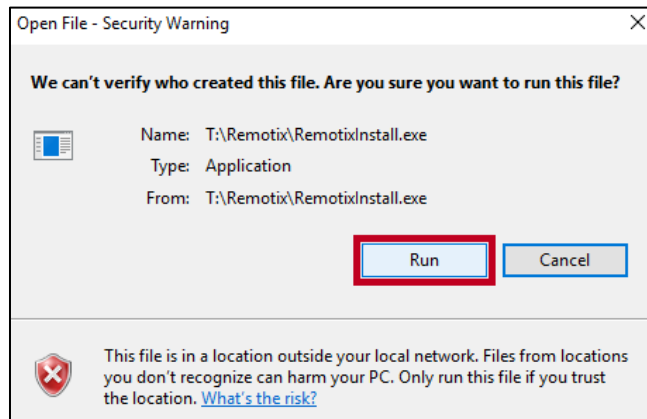


Figure 7 - Click Run

13. The *C:\WINDOWS\system32\cmd.exe* window appears to indicate the installation is running (See Figure 10).
14. When complete, a message will display in the window to indicate completion. Press **any key** to continue and close the window (See Figure 10).

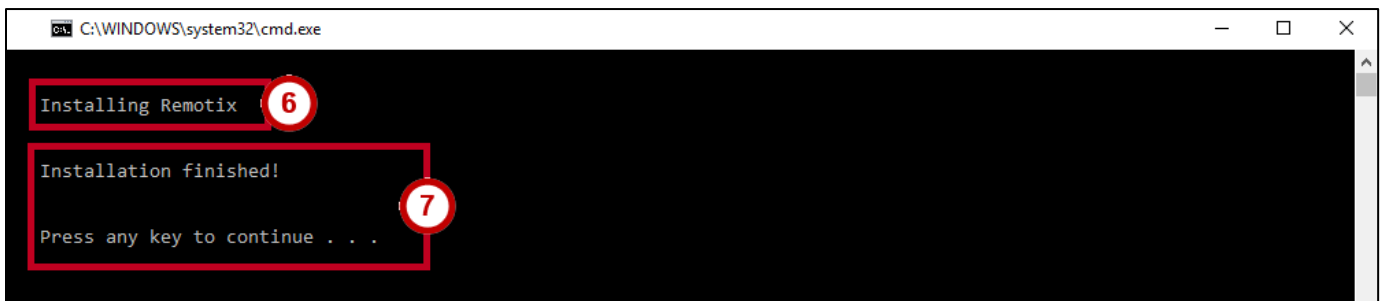


Figure 8 - Installing Remotix

15. A desktop shortcut is installed on your Windows 10 PC (See ). Double-click the **Remotix** icon to open.

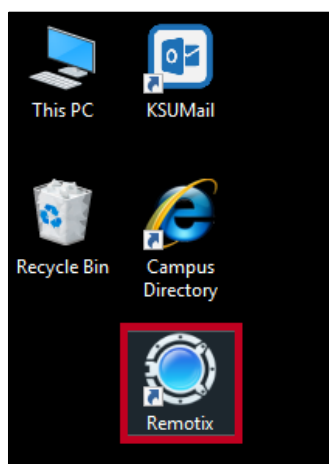


Figure 9 - Remotix Desktop Shortcut

16. The *Remotix - Computer List* window appears. In the menu bar, click **File** (See Figure 10).

17. A drop-down menu appears. Click **New Connection** (See Figure 10).

18. A second drop-down menu appears. Click **VNC** (See Figure 10).

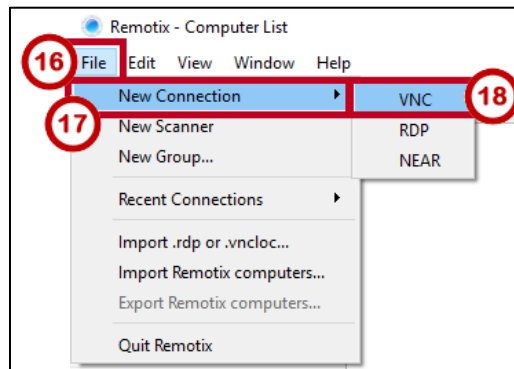


Figure 10 - New Connection

19. The *New Server* window appears. Enter a name for the connection (See Figure 11).

20. In the *Host* field, enter the **IP address** of your office Mac (e.g., 10.12.34.567) (See Figure 11).

21. Click **Save** (See Figure 11).

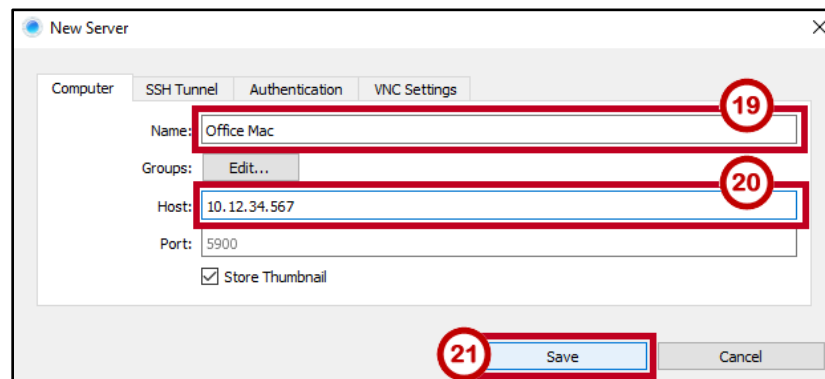


Figure 11 - Enter the IP Address

22. The new connection has been created (e.g., Office Mac).

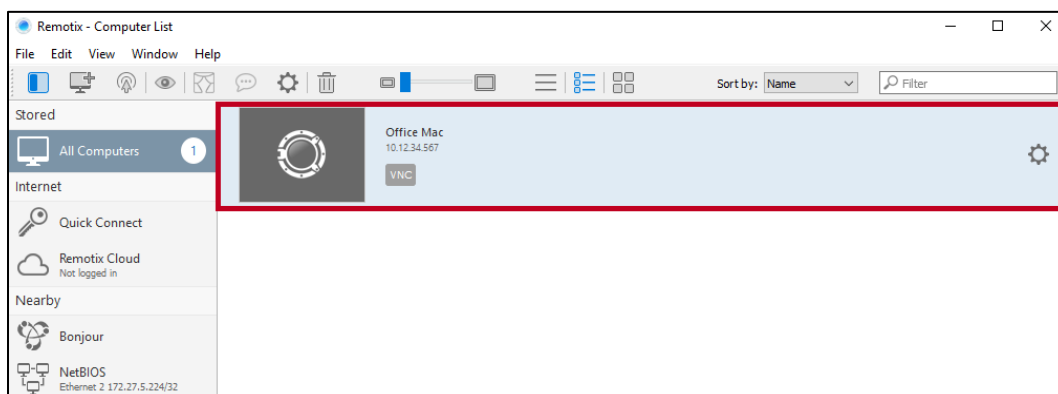


Figure 12 - New Connection Created