

## Getting Started with Remotix for Remote Connection to a Mac Using Windows 10

The following describes how to install and use *Remotix for Windows* remote desktop tools on a Windows 10 PC to allow remote connection to your office Mac. For information regarding connecting remotely to your office Mac, please refer to the Connecting to KSU VPN - PC to Mac documentation in the [UITS Documentation Center](#).

### Downloading Remotix for Windows

1. Using your preferred browser, navigate to **https://apps.kennesaw.edu**.
2. The *Application Gateway* window will appear. To log in, enter your **NetID** and **password** (See Figure 1).
3. Click **Login** (See Figure 1).

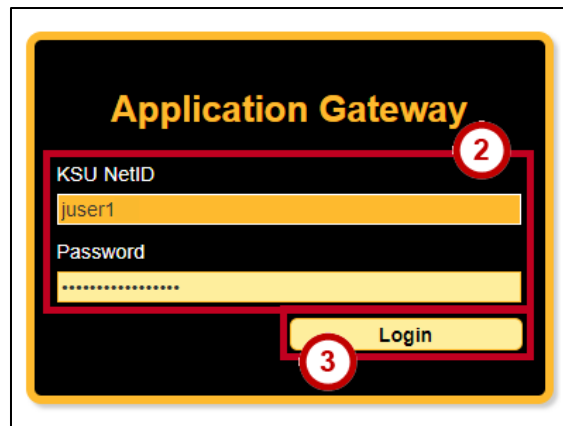


Figure 1 - Application Gateway Login

4. The *Application Gateway* window will appear. Under *Public Applications*, click the **KSU Software Downloads** button.

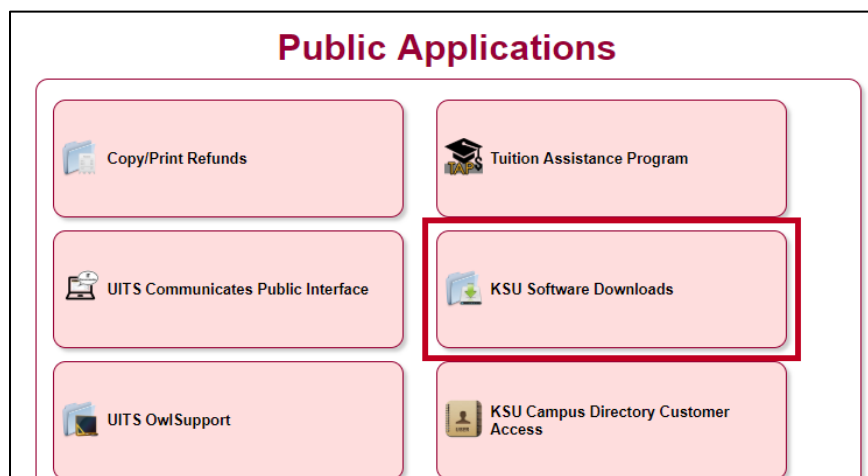


Figure 2 - Click KSU Software Downloads

5. Click **My Available Downloads**.

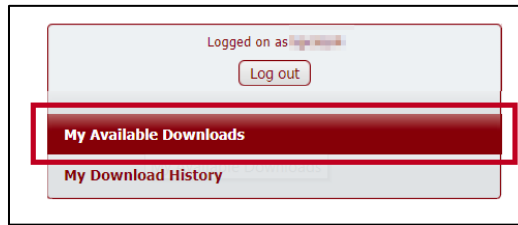


Figure 3 - Click My Available Downloads

6. In the *search box*, enter **Remotix** (See Figure 4).
7. Click the **Search** button (See Figure 4).
8. A list of matching file names will appear. Next to *Remotix for Mac Remote Access from PC*, click **View Files** (See Figure 4).

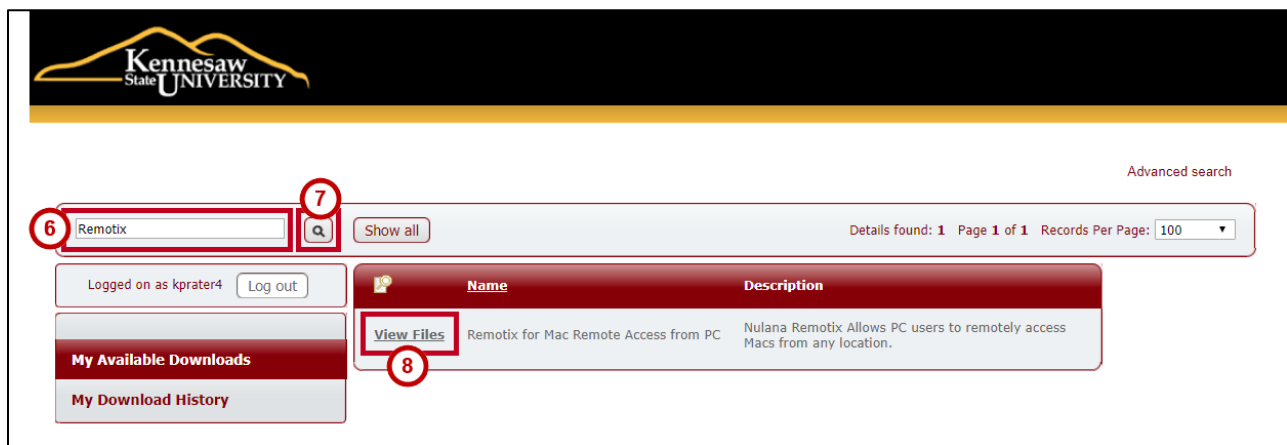


Figure 4 - Click View Files

9. Click **Accept and Continue**.

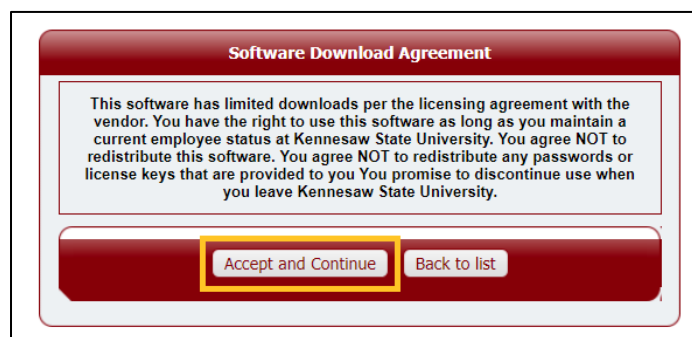


Figure 5 - Click Accept and Continue

10. Click **Download File**.

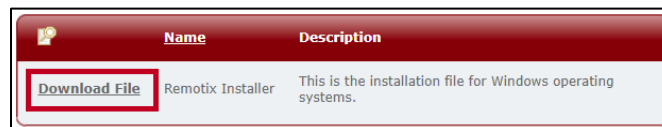


Figure 6 - Click Download File

11. The Remotixinstall.exe file begins to download to your default *downloads* location.

## Installing Remotix for Windows

1. When download of the installation file is complete, locate the file in your *default downloads folder* and run the **Remotixinstall.exe** file to install the application.
2. The *Open File - Security Warning* window will appear. Click **Run**.

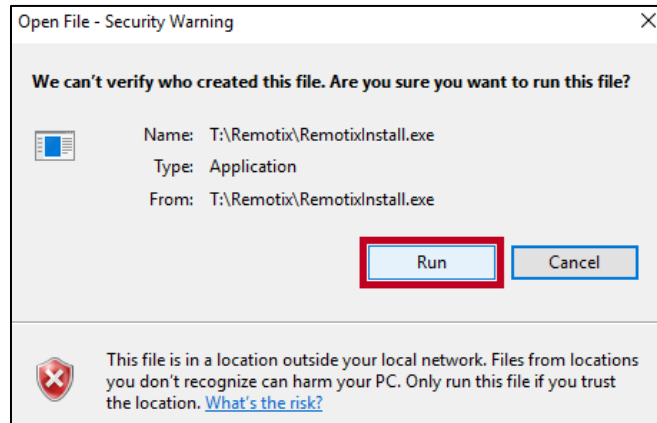


Figure 7 - Click Run

3. The `C:\WINDOWS\system32\cmd.exe` window appears to indicate the installation is running (See Figure 8).
4. When complete, a message will display in the window to indicate completion. Press **any key** to continue and close the window (See Figure 8).

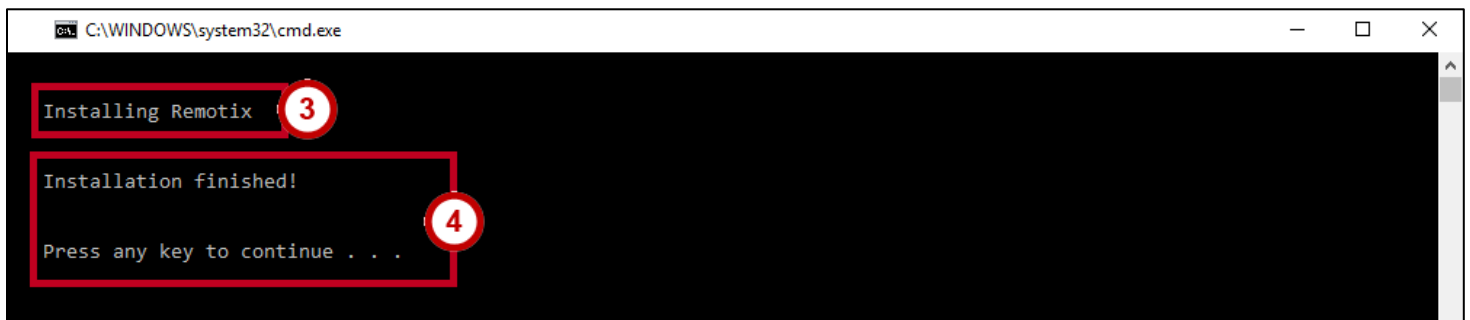


Figure 8 - Installing Remotix

5. A desktop shortcut is now installed on your Windows 10 PC. Double-click the **Remotix** icon to open.

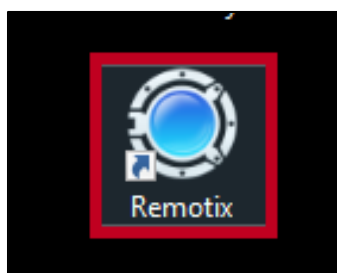


Figure 9 - Remotix Desktop Shortcut

6. The *Remotix - Computer List* window will appear. In the menu bar, click **File** (See Figure 10).
7. A drop-down menu appears. Click **New Connection** (See Figure 10).
8. A second drop-down menu appears. Click **VNC** (See Figure 10).

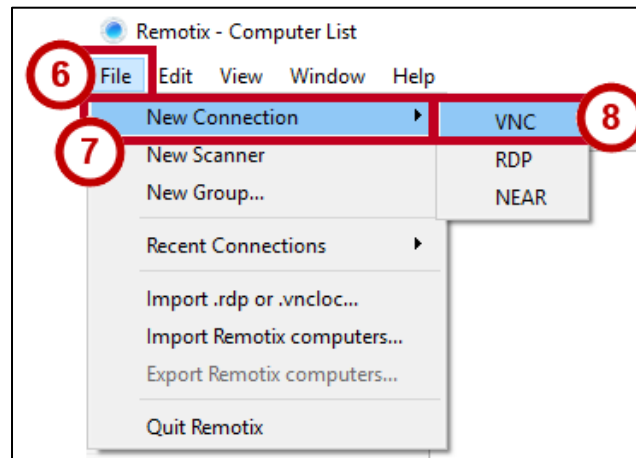


Figure 10 - New VNC Connection

9. The *New Server* window appears. Enter a name for the connection (See Figure 11).
10. In the *Host* field, enter the **Computr Name** of your office Mac (e.g., KSUP12345mac) (See Figure 11).
11. Click **Save** (See Figure 11).

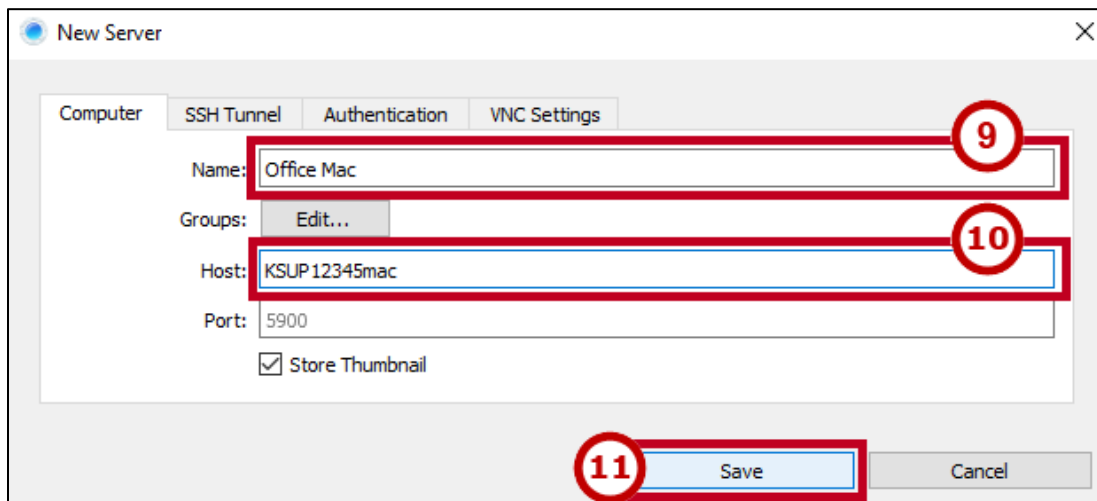


Figure 11 - Enter the Computer Name

12. The **new connection** has been created (e.g., Office Mac). To establish a remote connection, double-click the **connection icon**.

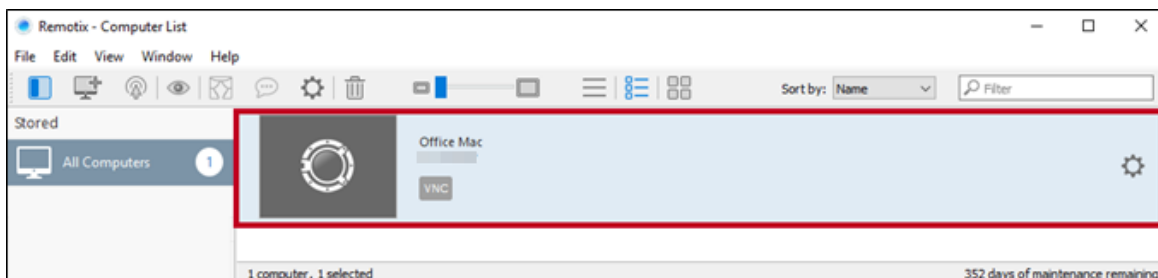


Figure 12 - New Connection Created

13. The *Authentication* window appears for the selected computer with your *NetID* populated. Enter your **password** (See Figure 13).
14. Click **Connect** (See Figure 13)

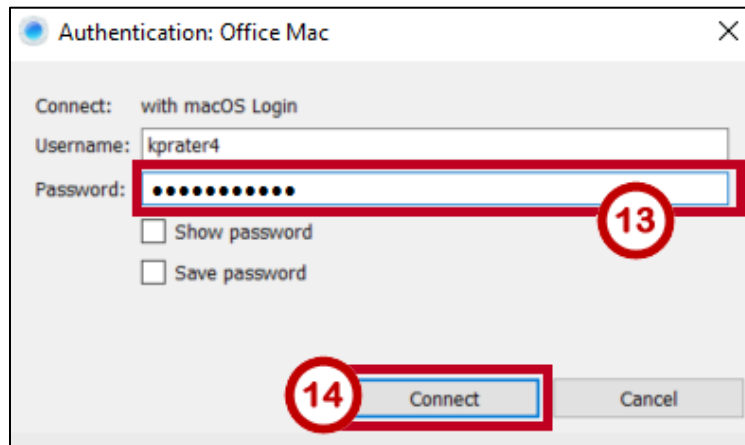


Figure 13 - Click Connect

15. You are now remotely connected to your office Mac.
- Note:** By default, the connection is a control-based connection, unless you click one of the other connection types in the viewer toolbar.

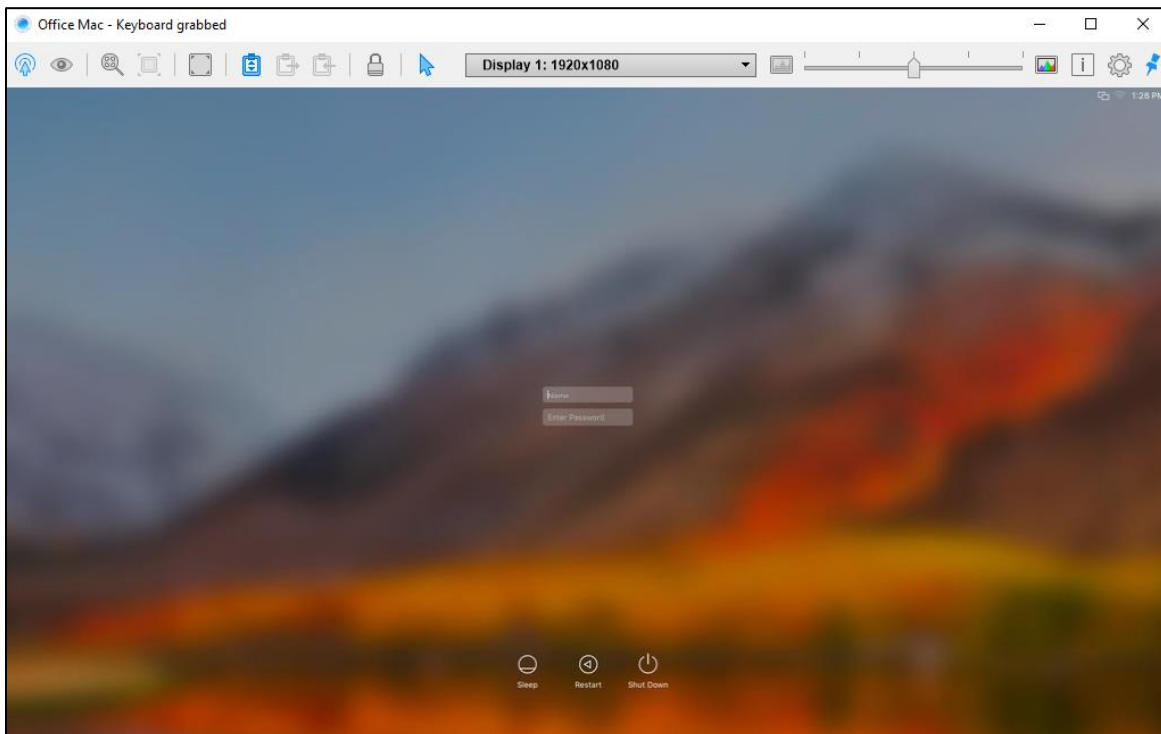


Figure 14 - Remotely Connect to Mac

## Remote Connection Viewer Window Toolbar

Following a successful remote connection, the viewer window toolbar will appear at the top of the window. The following describes the viewer toolbar controls:



Figure 15 - Remote Viewer Toolbar

- a. **Control:** Provides control over the remote computer (See Figure 15).
  - b. **Observe:** Provides observe control over the remote computer (See Figure 15).
  - c. **Zoom to fit:** Scales the remote computer desktop to the size of the viewer window (See Figure 15).
  - d. **Actual size:** Scales the remote computer desktop (See Figure 15).
  - e. **Fullscreen:** Maximizes the viewer window to full screen (See Figure 15).
  - f. **Automatic clipboard synchronization:** Synchronizes the clipboards of the local computer and remote computer (See Figure 15).
  - g. **Send clipboard:** Replaces contents of the remote computer clipboard with those of the local clipboard (See Figure 15).
  - h. **Get clipboard:** Transfers contents of remote computer clipboard to the local computer clipboard (See ).
  - i. **Lock/Unlock:** Locks or unlocks the remote server screen (See Figure 15).
  - j. **Toggle local cursor:** Choose whether to show local mouse pointer over a remote machine screen (See Figure 15).
  - k. **Select display:** Allows you to choose between remote monitors if more than one monitor is connected (e.g., monitor 1, monitor 2, or extended display) (See Figure 15).
  - l. **Image quality:** Adjusts remote screen image quality (See Figure 15).
  - m. **Show/Hide connection info panel:** Opens a panel displaying current connection information (See Figure 15)
  - n. **Settings:** Shows viewer settings in a pop-up window (See Figure 15).
  - o. **Pin toolbar:** Turns off automatic hiding of viewer toolbar (See Figure 15).
16. When ready to disconnect from the remote connection, click the **Exit (X)** button in the right-hand corner of the viewer.

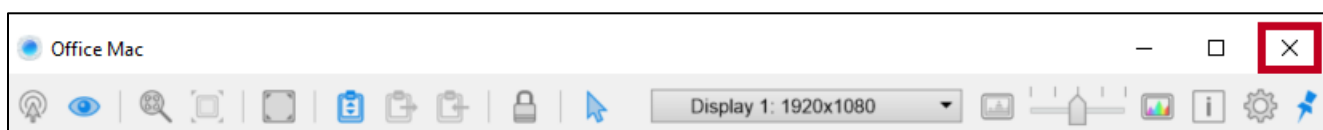


Figure 16 - Click the Exit Button

17. Close the *Remotix for Windows* application.

For additional support, please contact the KSU Service Desk

Page 6 of 6

**KSU Service Desk for Faculty & Staff**

•Phone: 470-578-6999

•Email: [service@kennesaw.edu](mailto:service@kennesaw.edu)

•Website: <http://uits.kennesaw.edu/>

Copyright © 2018 – University Information Technology Services - Kennesaw State University