

The following guide will walk you through connecting to the KSU Wi-Fi using an Android phone. Please note, Android phone layouts may differ by model.

**Note:** This guide was written using a Pixel 2 on Android version 11.

1. On the Home screen, swipe down from the top to display device settings (See Figure 1).
2. From the menu, press and hold **Wi-Fi** to display available Wi-Fi connections (See Figure 1).

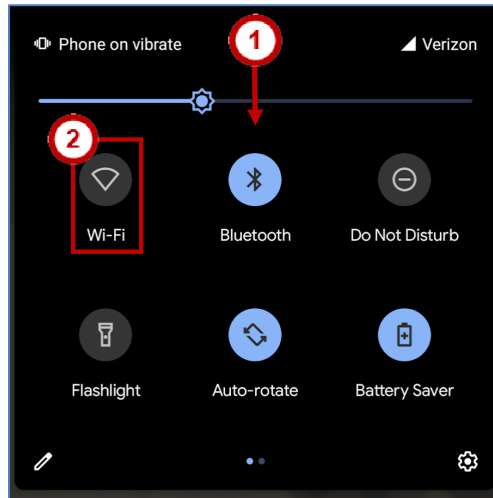


Figure 1 - Swipe Down from the Top of the Screen and Tap the Wi-Fi Icon

3. Make sure Wi-Fi is turned on (See Figure 2).
4. From the *Wi-Fi* menu, tap **KSU** (See Figure 2).

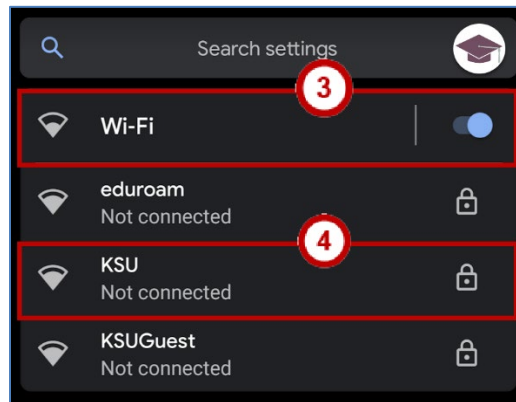
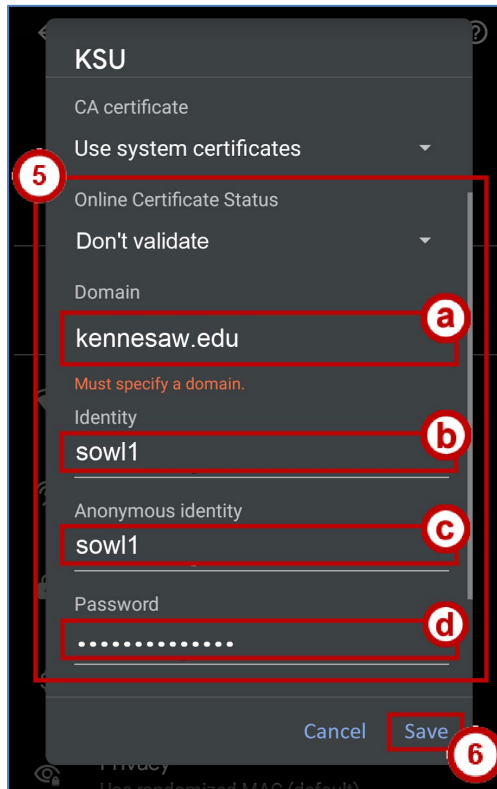


Figure 2 -Verify Wi-Fi is on and tap KSU Wi-Fi

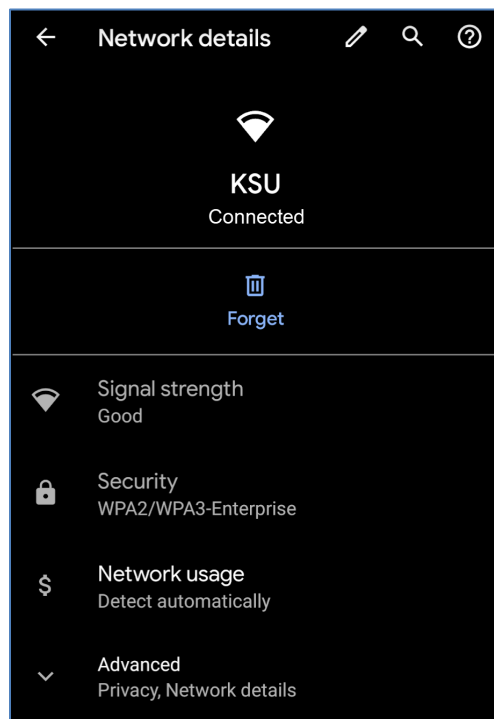
5. The *KSU Wi-Fi panel* will open. Here, you may:
  - a. **Domain:** Type **kennesaw.edu** (See Figure 3).
  - b. **Identity:** Enter your **NetID** and **NetID password** (See Figure 3).
  - c. **Anonymous identity:** Enter your **NetID** (See Figure 3).
  - d. **Password:** Enter your **NetID password** (See Figure 3).
6. Tap **Save** (See Figure 3).

**Note:** If prompted, make sure that **CA certificate** is set to *Don't validate*.



**Figure 3 - Enter NetID and NetID password and Tap Connect**

7. Your device will now be connected to the KSU Wi-Fi.



**Figure 4 – You Are Connected to the KSU Wi-Fi**